

XXII RECUEIL

8

DE DANCES

Pour l'Année

1724.

De la Composition

DE

MONSIEUR PECOURT

Recueillies et mises au Jour

Par le S.^r DEZAIS M.^e de DANCE

de l'Académie Royale de Musique.

Prix broché. 4.^{tt}

Se Vend A PARIS

Chez le S.^r DEZAIS Faubourg S.^t Germain.

Ruë de Bussi à la Cour Imperiale.

AVEC PRIVILEGE DU ROY. 1724... A

Avertissement

Le Public aura lieu d'être content de ce Recueil puisque comme les précédens, il contient des Danses de M^r. Pécour, j'ay cru que pour satisfaire le goût des connoisseurs, il étoit à propos d'y joindre des danses de Messieurs Blondy et Marcel: je donneray entre pasques et la pentecoste un livre de six Contre danses à quatre et à huit faites expres; il fera du prix de cinq livres.

On continue de débiter les Petits Livres d'airs de Danse et de Contre-danses avec la basse continue du prix de vingt sols....

Ceux qui me feront l'honneur de m'écrire auront soin d'affranchir les ports de lettres sans quoy elles ne seront pas reçues.....

premier Rigaudon

Musical notation for the first Rigaudon, consisting of a single staff with a treble clef, a key signature of one sharp (F#), and a common time signature (C). The melody is written in a rhythmic style characteristic of a Rigaudon.

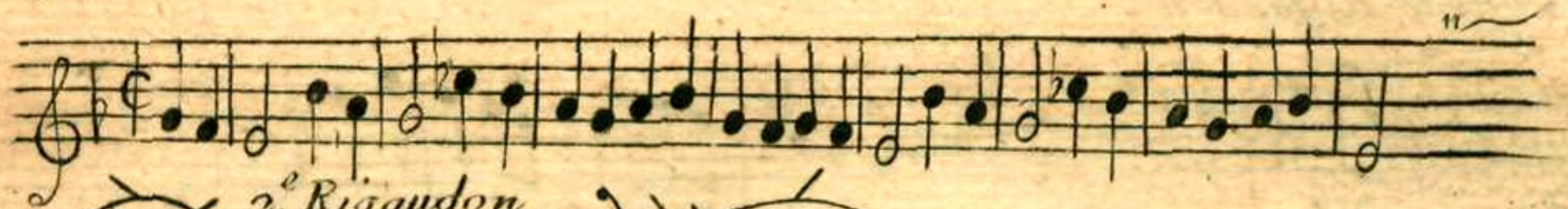
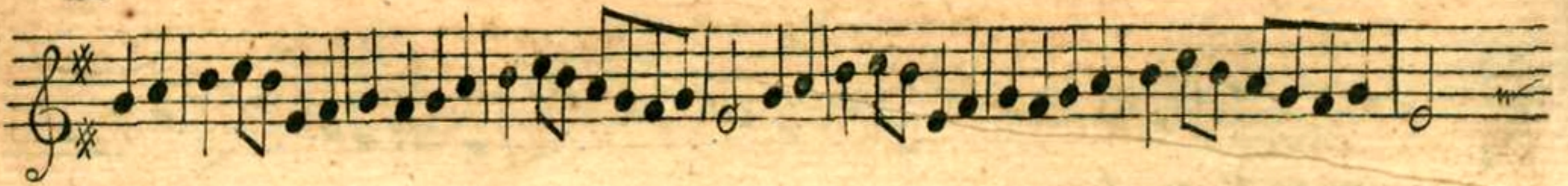
La Musette par M. Pécour

Musical notation for 'La Musette par M. Pécour', consisting of a single staff with a treble clef, a key signature of one sharp (F#), and a common time signature (C). The melody is written in a rhythmic style characteristic of a Musette.

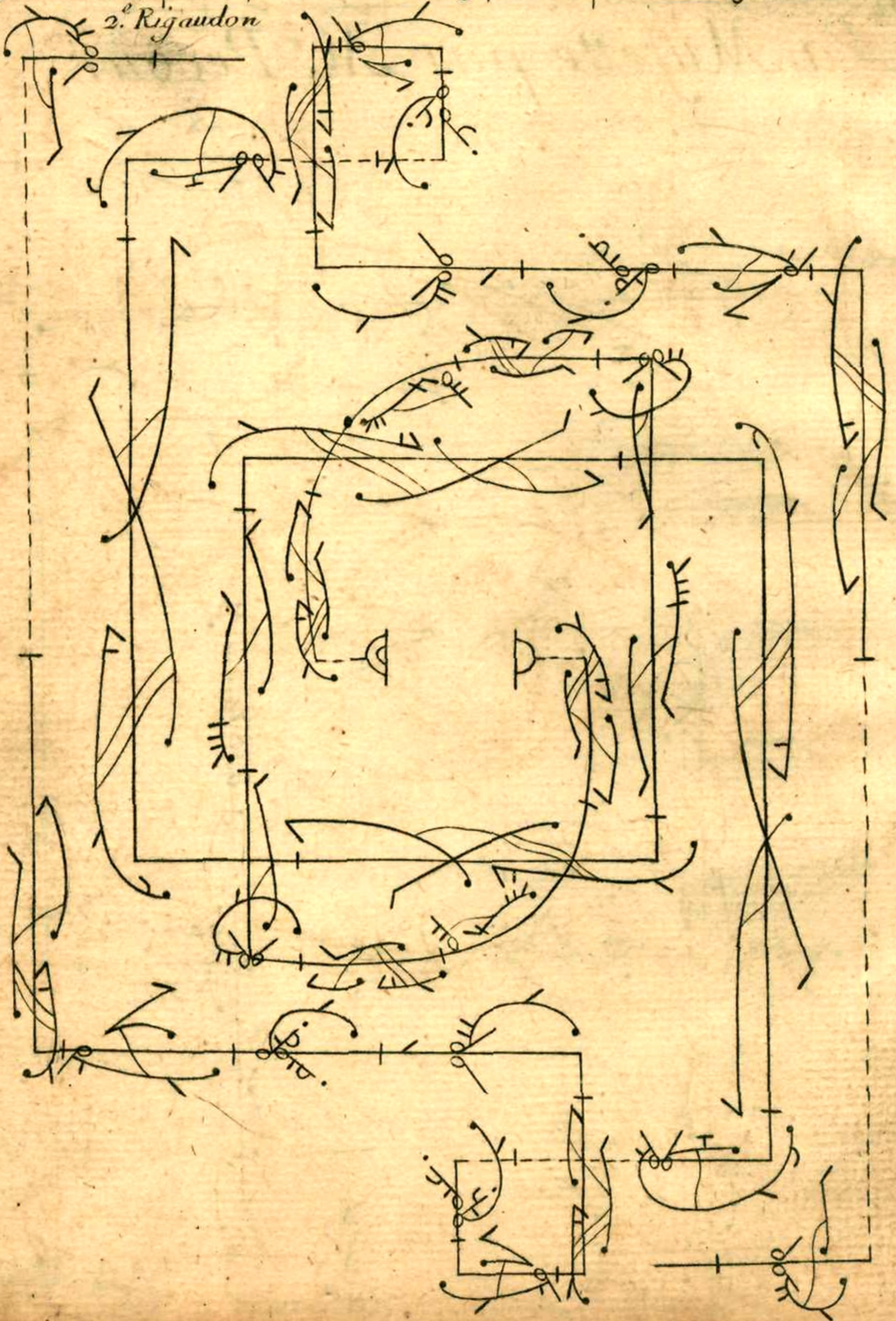
A complex musical score featuring multiple staves. At the top, there are two staves of musical notation. Below them is a large, central staff with a treble clef, a key signature of one sharp (F#), and a common time signature (C). This central staff contains a highly ornate and intricate melody with many flourishes and slurs. To the left and right of the central staff are several smaller staves, each containing musical notation. The notation is dense and detailed, with many slurs and ornaments. The overall style is characteristic of 18th-century French lute tablature or a similar instrument.

la Musette

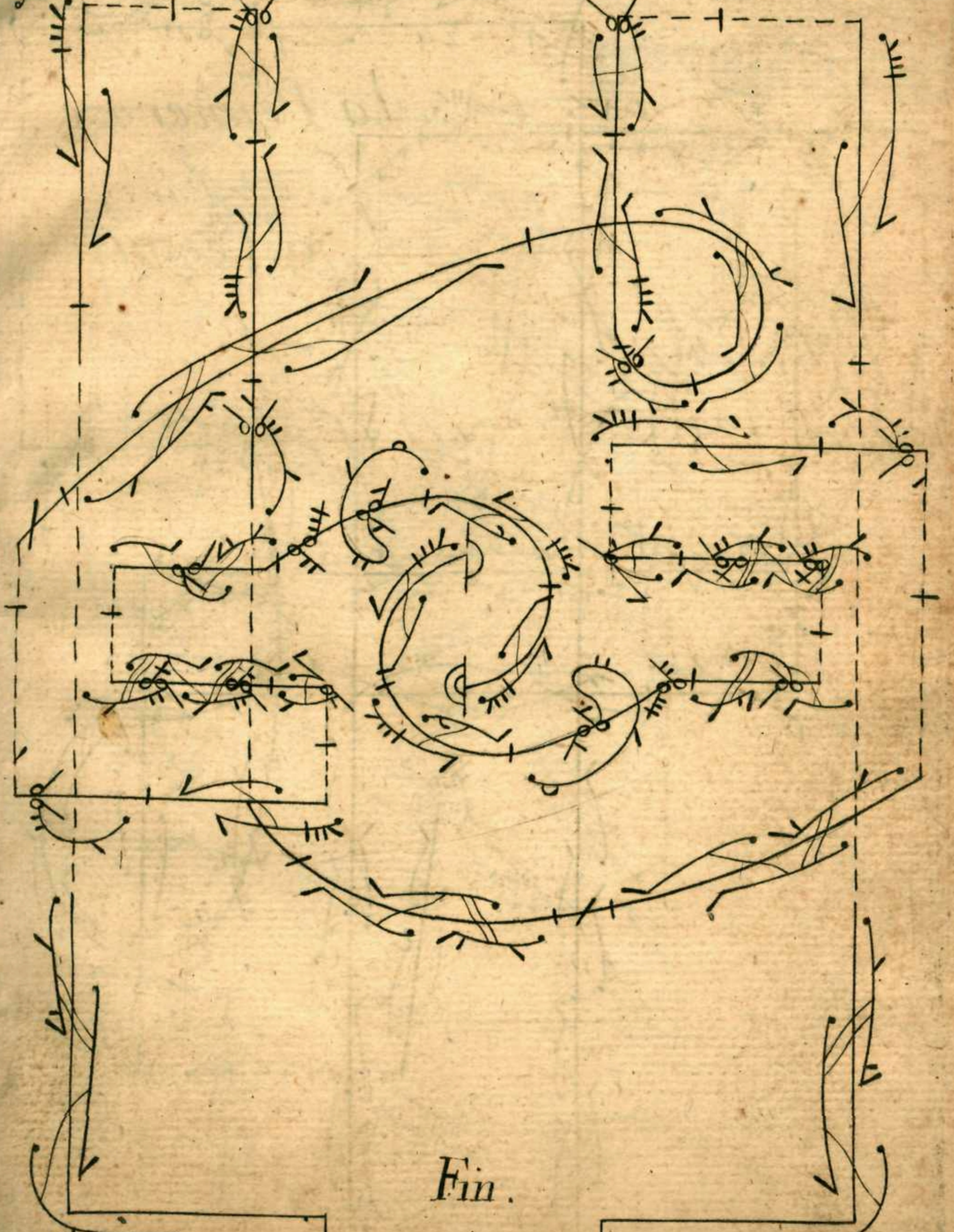
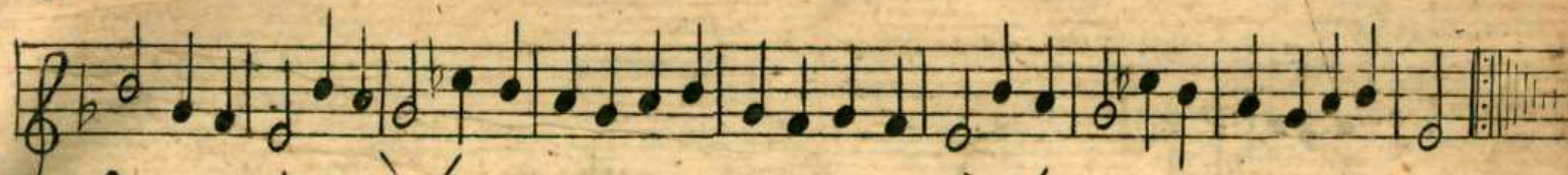
2



2.^e Rigaudon



la Musette



Fin.

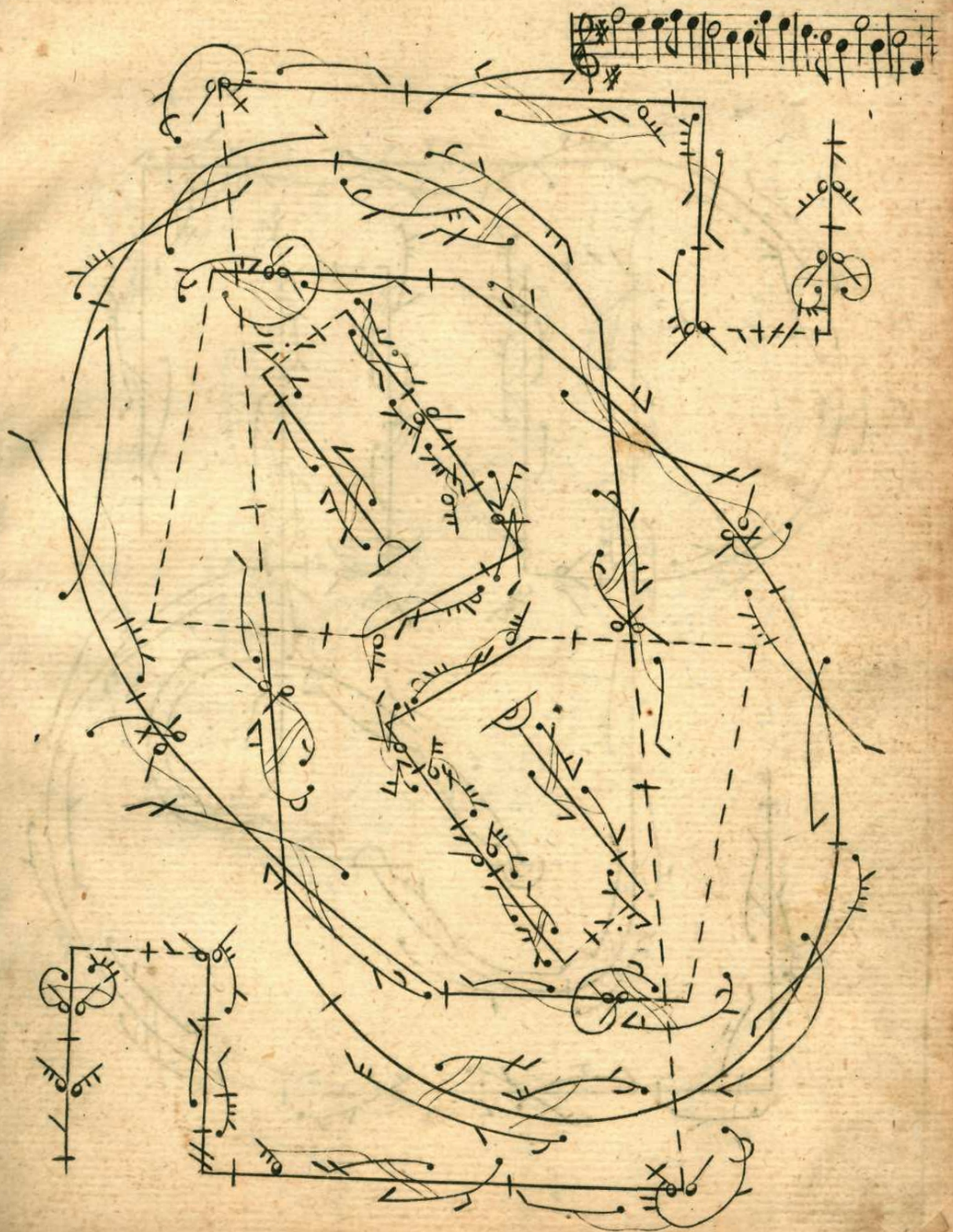
+

Forlane

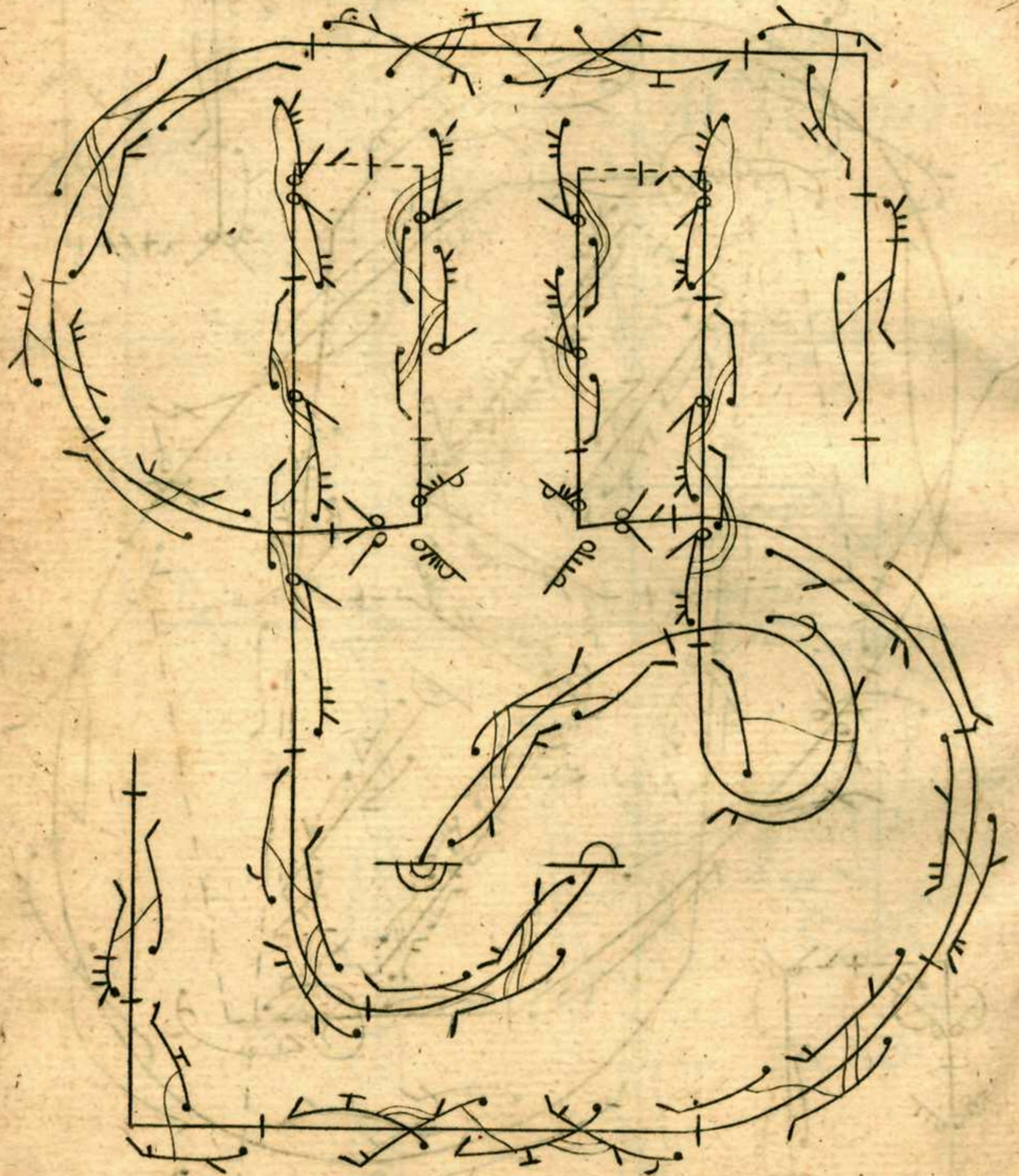
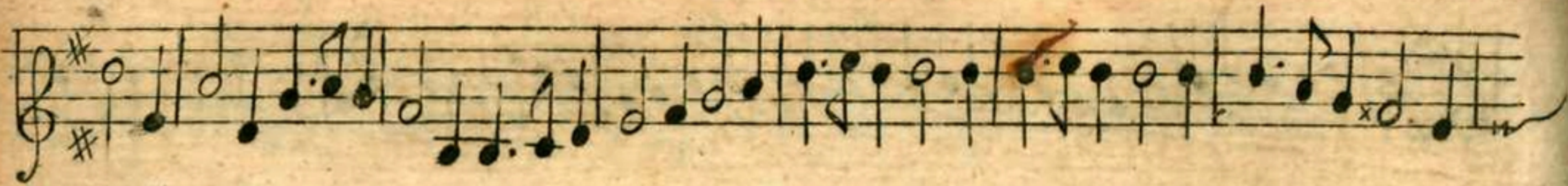
la Primeroze

Par
M. Pecour

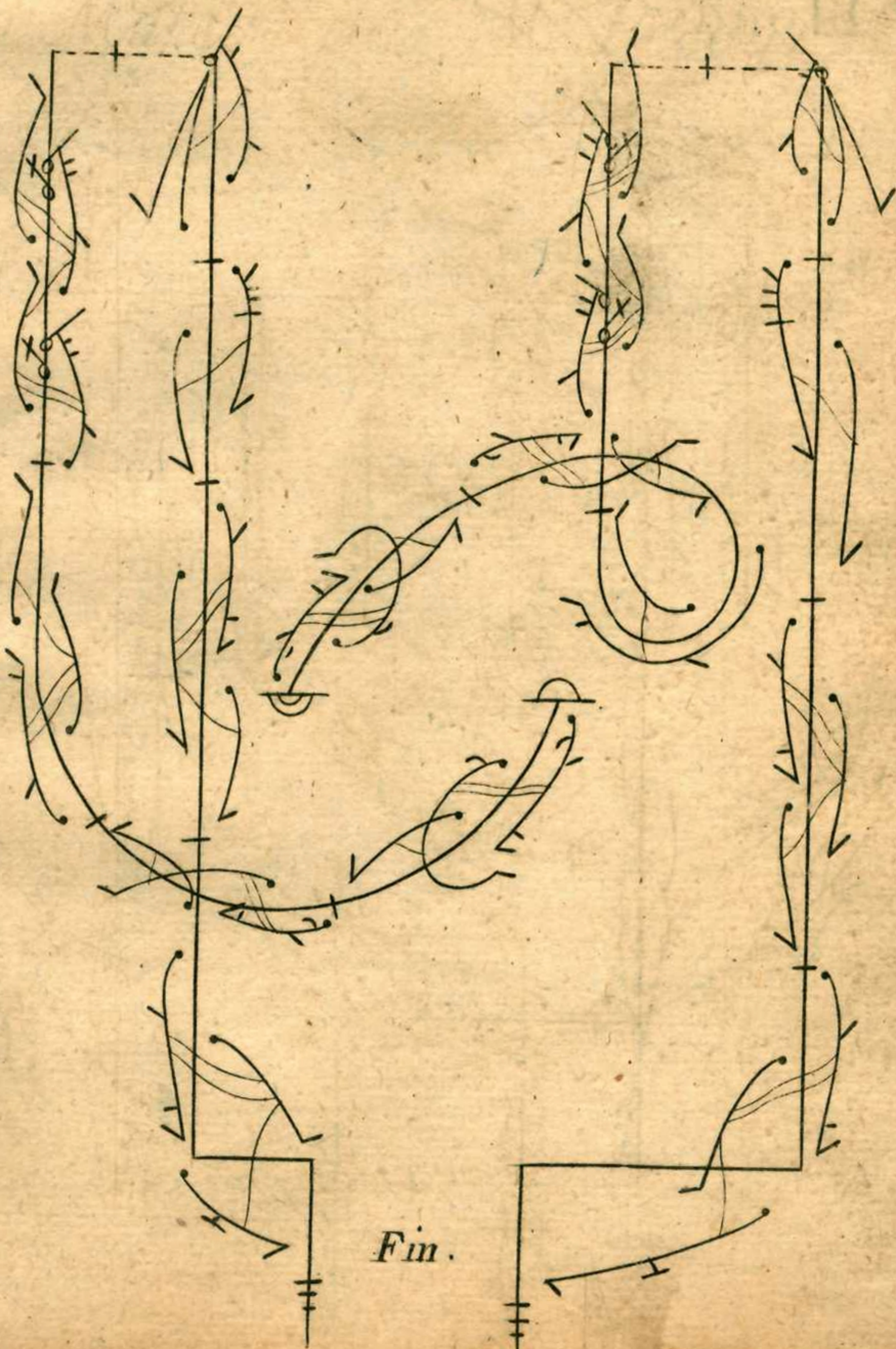
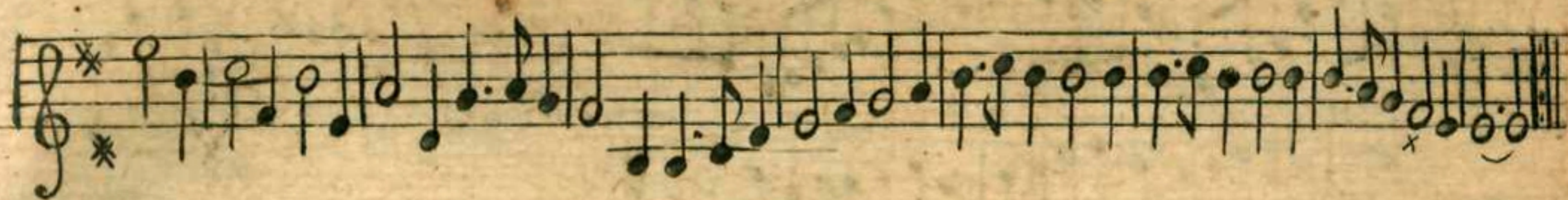
la Primeroze

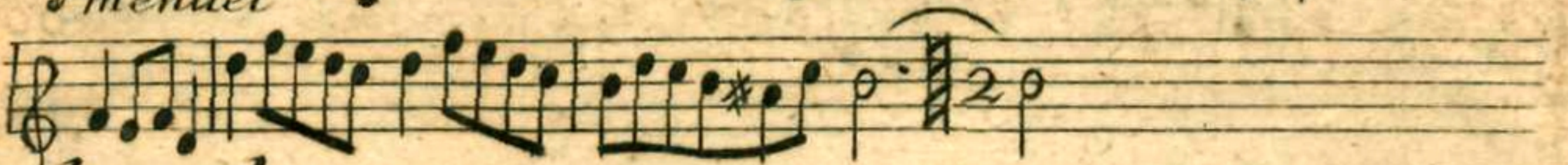


la Pruneroze

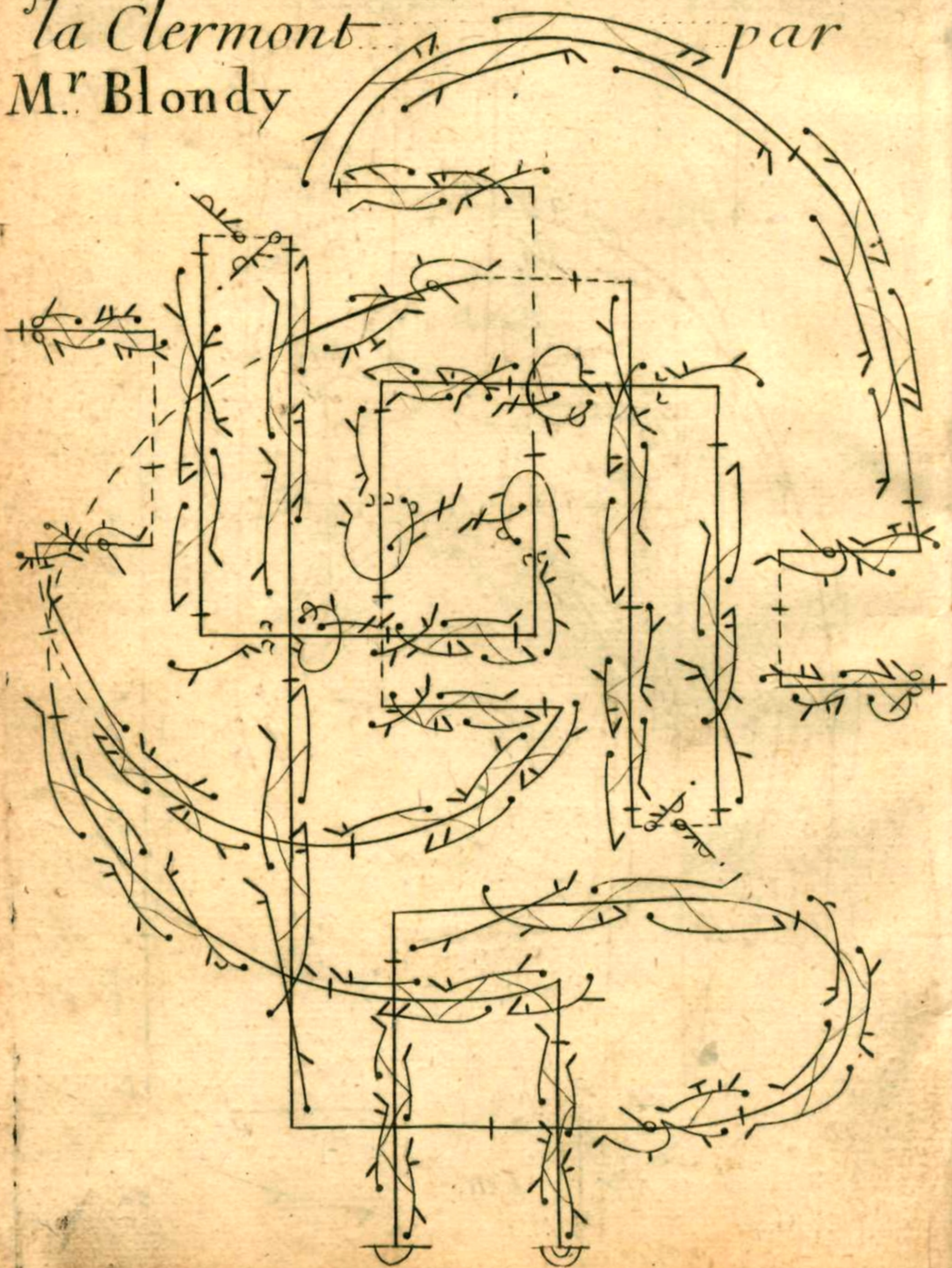


la Primeroze





la Clermont par
M.^r Blondy



Rigaudon

Three staves of musical notation in G major, featuring treble clefs and a key signature of one sharp (F#). The notation includes various note values and rests, with a double bar line at the end of the third staff.

A large, intricate diagram consisting of a circular frame containing several vertical lines. These lines are filled with complex, overlapping musical notation, including notes, stems, and beams, resembling a dense, abstract musical score or a complex diagram.

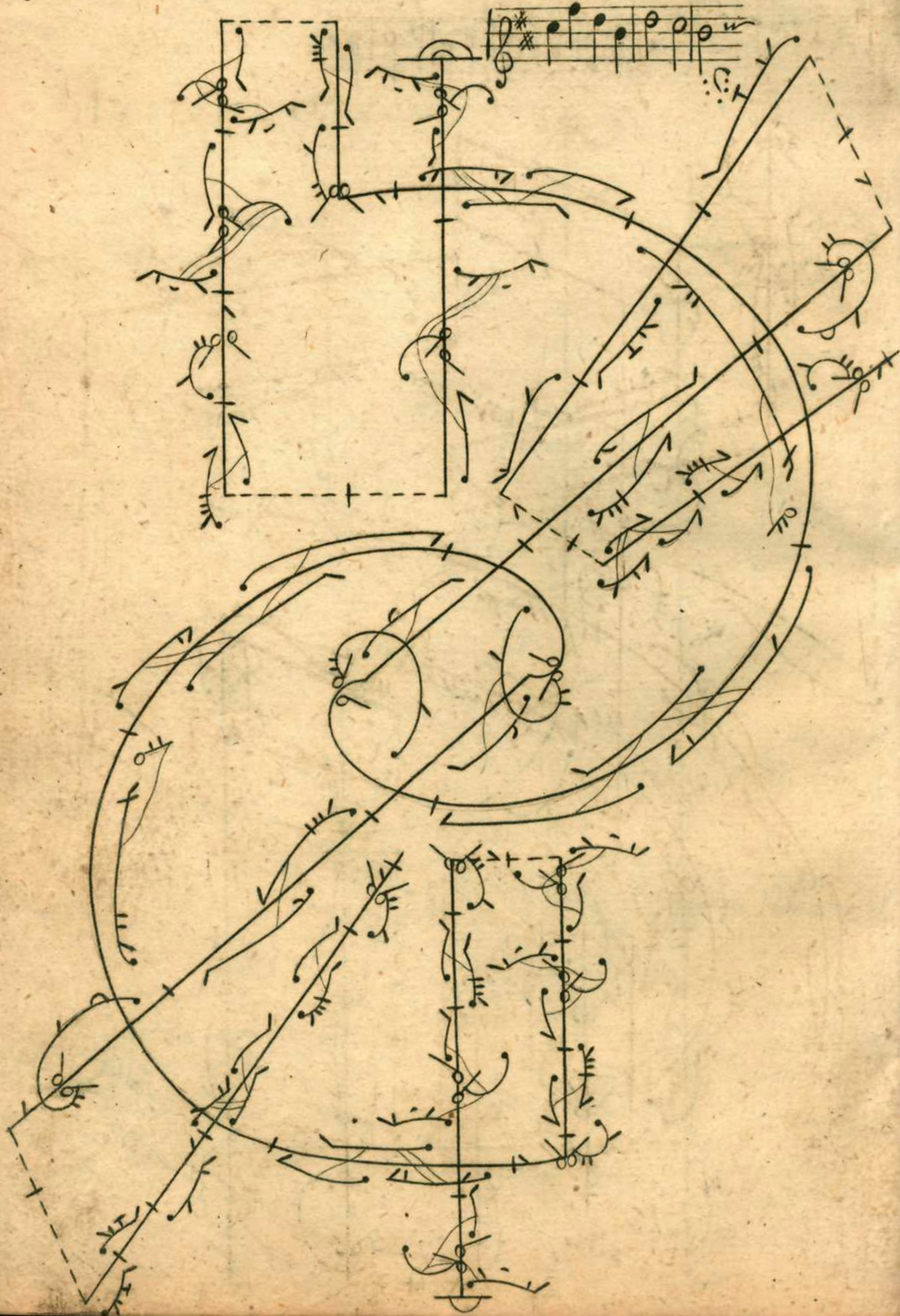
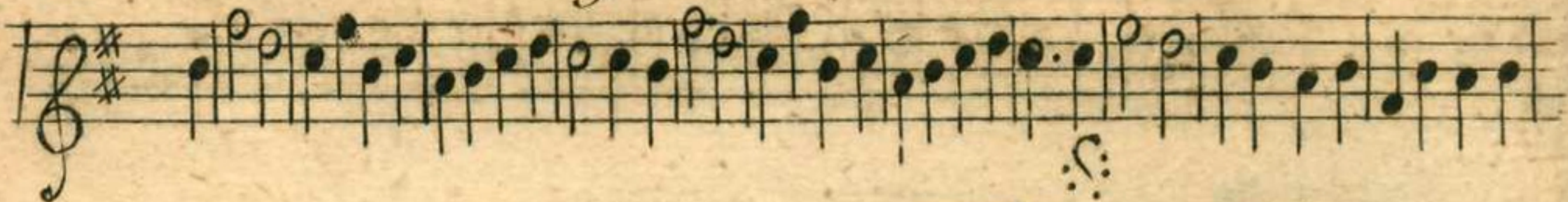
Fin

Two staves of musical notation in G major, 2/4 time. The first staff begins with a treble clef, a key signature of one sharp (F#), and a time signature of 2/4. The melody consists of a series of eighth and sixteenth notes, ending with a repeat sign. The second staff continues the melody with similar rhythmic values and a repeat sign at the end.

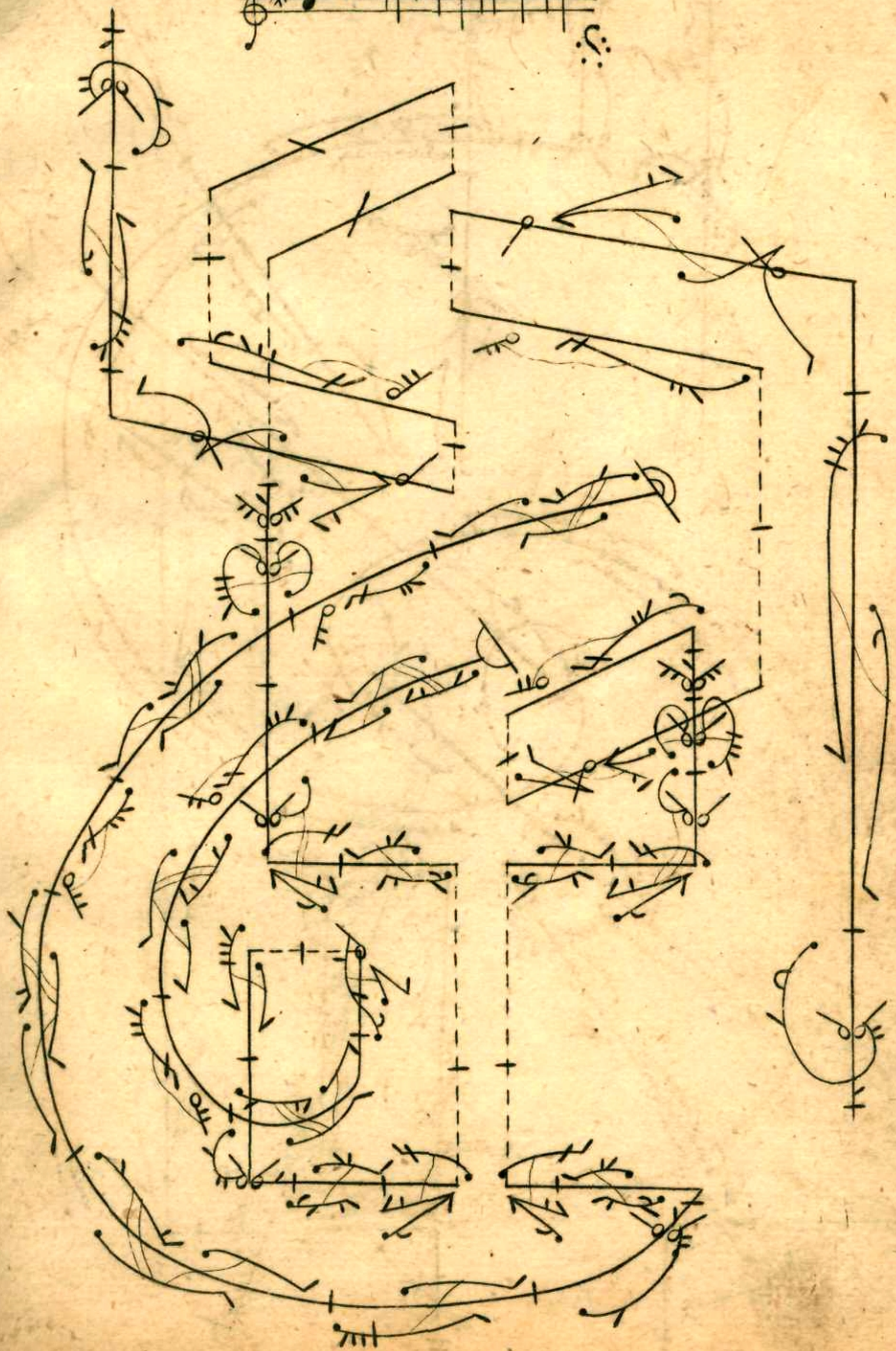
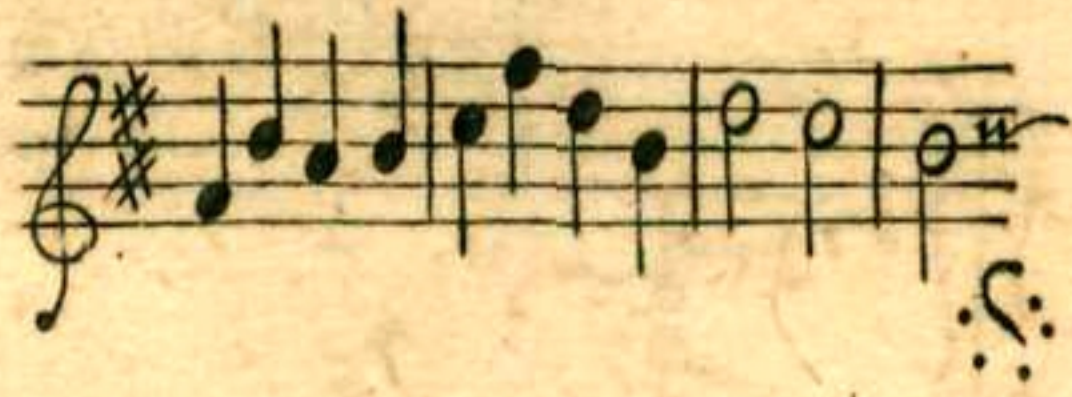
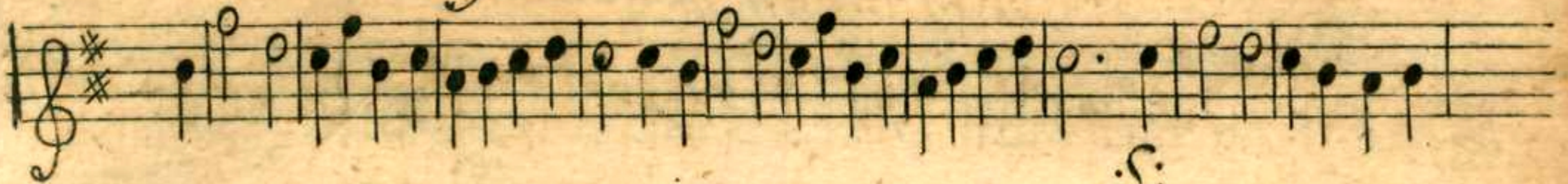
Rigaudon Nouveau
par M. Marcel.

A large, intricate musical score for a Rigaudon Nouveau, featuring multiple staves with complex rhythmic patterns, including many sixteenth and thirty-second notes, and various ornaments. The score is enclosed in a dashed rectangular border.

Rigaudon nouveau

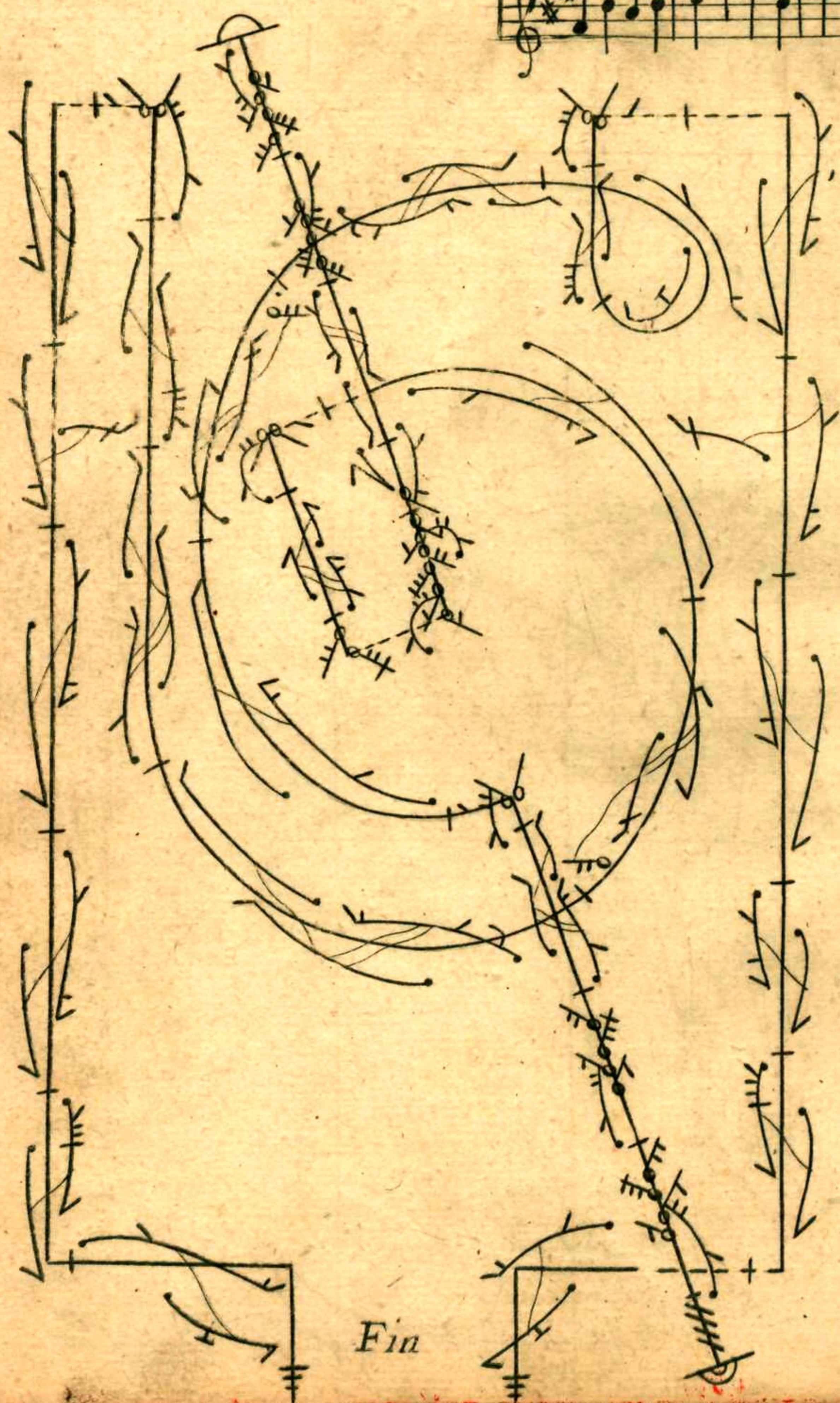
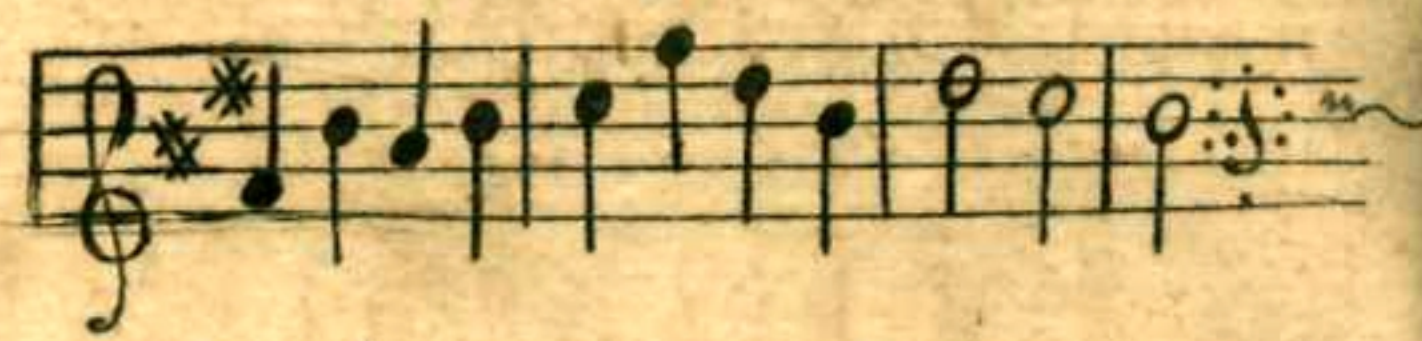
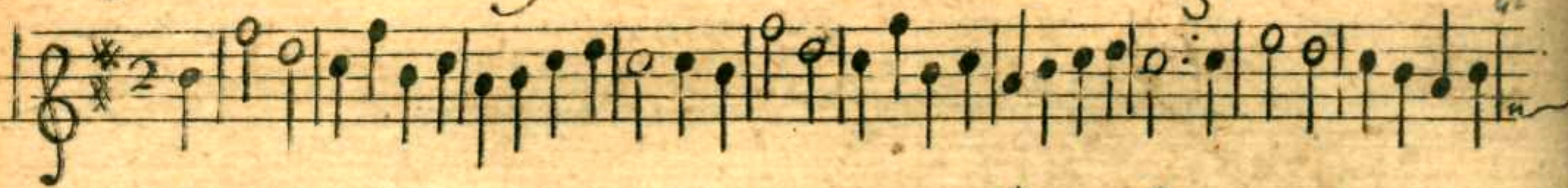


Rigaudon nouveau



Rigaudon nouveau

♩



Fin